

**KEYSCAPE
DESIGN STUDIO**



**HOW KEYSCAPE DESIGN STUDIO
ENABLED LUC TO VISUALISE THE
EDEN PROJECT 15 YEARS INTO
THE FUTURE**

**CREATING A LANDMARK PROJECT TO
MARK THE MILLENNIUM**

**USING KEYSCAPE LUC WERE ABLE TO
INTERPRET FREEHAND DESIGNS**

**THE EDEN PROJECT LANDSCAPE
HAS BEEN HIGHLY SUCCESSFUL AND
IS STILL DEVELOPING**

FUTURE • FASTER

KEYSCAPE DESIGN STUDIO

THE MOST ESTABLISHED AND INTEGRATED
CAD SOLUTION FOR THE LANDSCAPE INDUSTRY



CHALLENGE

TO CONVERT AN EXHAUSTED 50 METRE DEEP CHINA CLAY PIT NEAR ST AUSTELL, CORNWALL, WITH NO SOIL INTO A LANDMARK PROJECT TO CELEBRATE THE YEAR 2000.

Land Use Consultants (LUC) worked with visionary Tim Smit and the project team to develop his “stories of man and plants” concept into a physical place to showcase plants from around the world in their natural environment.

The concept was interpreted by Dominic Cole and presented in the form of hand drawn sketches.

KeySCAPE was necessary to turn these concepts into a reality that could be built. This comprised a 3D model that was used to create views from anywhere on site and an attractive setting that would not only accommodate the biomes, the massive covered spaces that provided the appropriate climatic conditions for the plants, but a place that would absorb significant visitor numbers and activities.

SOLUTION

USING KEYSCAPE LUC WAS ABLE TO INTERPRET FREEHAND DESIGNS

WHAT WAS THE CONCEPT FOR THE LANDSCAPE DESIGN?

The requirement was to create a living theatre of plants and people, one that was sympathetic to the local environment but did not ignore the sites former use as a quarry.

WHAT WERE THE CHALLENGES?

There were many challenges: Solving the technical issues of stability and drainage. Providing access for a wide cross section of users while making use of the dramatic topography of the site and allowing space and suitable growing conditions for a wide variety of plant material including tall tropical trees.

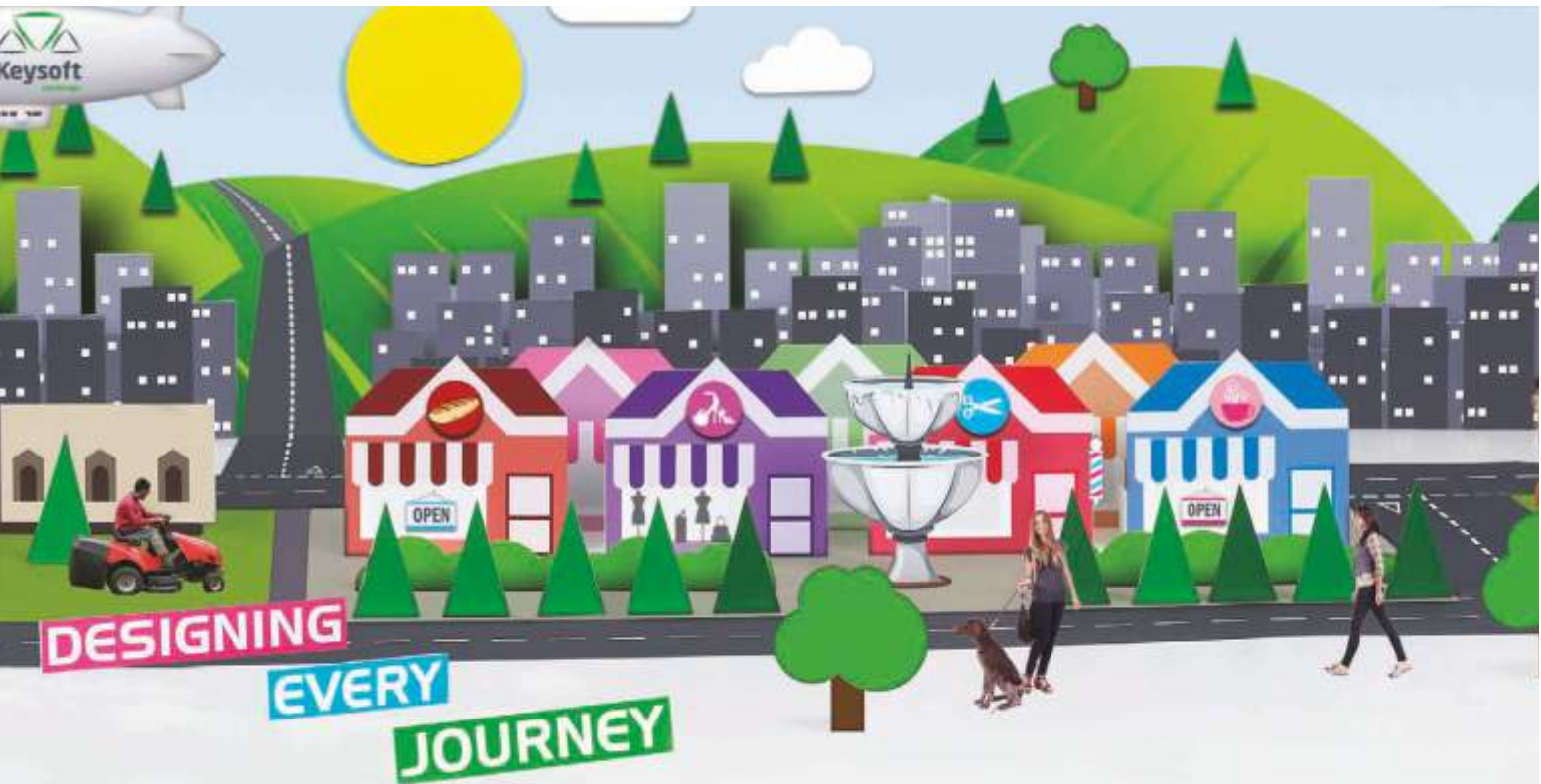
HOW DID THE USE OF KEYSCAPE HELP IN THIS PROCESS?

KeySCAPE Design Studio and AutoCAD were used to interpret Dominic Cole's freehand design concepts into a 3D model and accurate plans which were used to coordinate the landscape design with the architects and engineers. The KeySCAPE 3D symbols helped LUC to quickly generate 3D visuals of the site and core features used to support the detailed plans required for construction.

The benefits of using KeySCAPE to take the concept design through to a living breathing site are evident when comparing the concept images and 3D model created in 1999 with the site after 15 years.

DID YOU USE ANY OTHER SOFTWARE?

LUC used a dedicated 3D modelling application to understand the extreme topography of the site and to ensure that the structures, paths, road infrastructure and drainage were all built at appropriate gradients.



RESULT

HOW SUCCESSFUL HAS THE EDEN PROJECT LANDSCAPE BEEN?

The Eden Project has been highly successful and is now a globally recognised landmark site.

The site is still developing, and based on their ability to deliver the initial project, LUC were commissioned as Landscape Architects to oversee additional developments on site, most notably the education centre.



3D COMPUTER MODEL



LUC INTERPRETATION - KEYSCAPE



EDEN PROJECT REALISED

“““

KEYSCAPE ENABLED US TO INTERPRET THE DESIGNS OF OUR LANDSCAPE ARCHITECTS INTO ACCURATE PLANS AND DRAWINGS FOR OTHERS TO IMPLEMENT

**JOHN ADAMS
LUC**

KEYSCAPE DESIGN STUDIO AT A GLANCE

KEYSCAPE DESIGN STUDIO IS OUR FLAGSHIP PRODUCT: CUTTING-EDGE LANDSCAPE DESIGN SOFTWARE

KeySCAPE encourages you to be creative. Its flexible approach makes it easy for you to develop your own graphic style by adding to our already extensive library of 2D, 3D elevation symbols and creating your own custom linetypes. If you can't see what you need in our database of over 7500 plants, you can quickly add your own species and specifications or import them from your preferred lists.

Making modifications in KeySCAPE is very simple. You can make major drawing changes in minutes, with dynamic schedules ensuring that your drawing is always up to date. Validation features reduce the chance of you issuing drawings with errors. You can apply costs as you design to ensure that you remain within budget.

KEY POINTS

- Softworks and Hardworks modules
- Optional AutoCAD OEM Engine
- Site Survey
- KeyTREE (optional add-on)
- 3D Visualisation

Technical Specification - For 32-Bit version Microsoft® Windows® 8 or Microsoft® Windows® 7 Professional, Ultimate, or Enterprise operating system

32-Bit Intel® Pentium® 4 or AMD Athlon dual-core processor, 3.0 GHz or higher with SSE2 technology.

3 GB RAM - (4 GB RAM recommended) 1280 x 768 (1600 x 1050 or higher recommended) with true color 8 GB free disk space

Microsoft® Internet Explorer® 9.0 or later

For 64-Bit AutoCAD 2014 - As above except - AMD Athlon 64, AMD Operton with SSE2 technology Intel® Xeon®, or Intel Pentium 4 with Intel EM64T support with SSE2 technology

4 GB RAM minimum (8 GB RAM recommended).

KeySCAPE LT Design Studio includes its own AutoCAD (OEM) Engine so you do not need AutoCAD to run the software. This is primarily a 2D based AutoCAD engine with some 3D capabilities. KeySCAPE LT Design Studio allows you to share drawings easily with other design partners using AutoCAD without the need to convert.

T: +44 (0) 3451 30 30 40

www.keysoftsolutions.com



FUTURE • FASTER